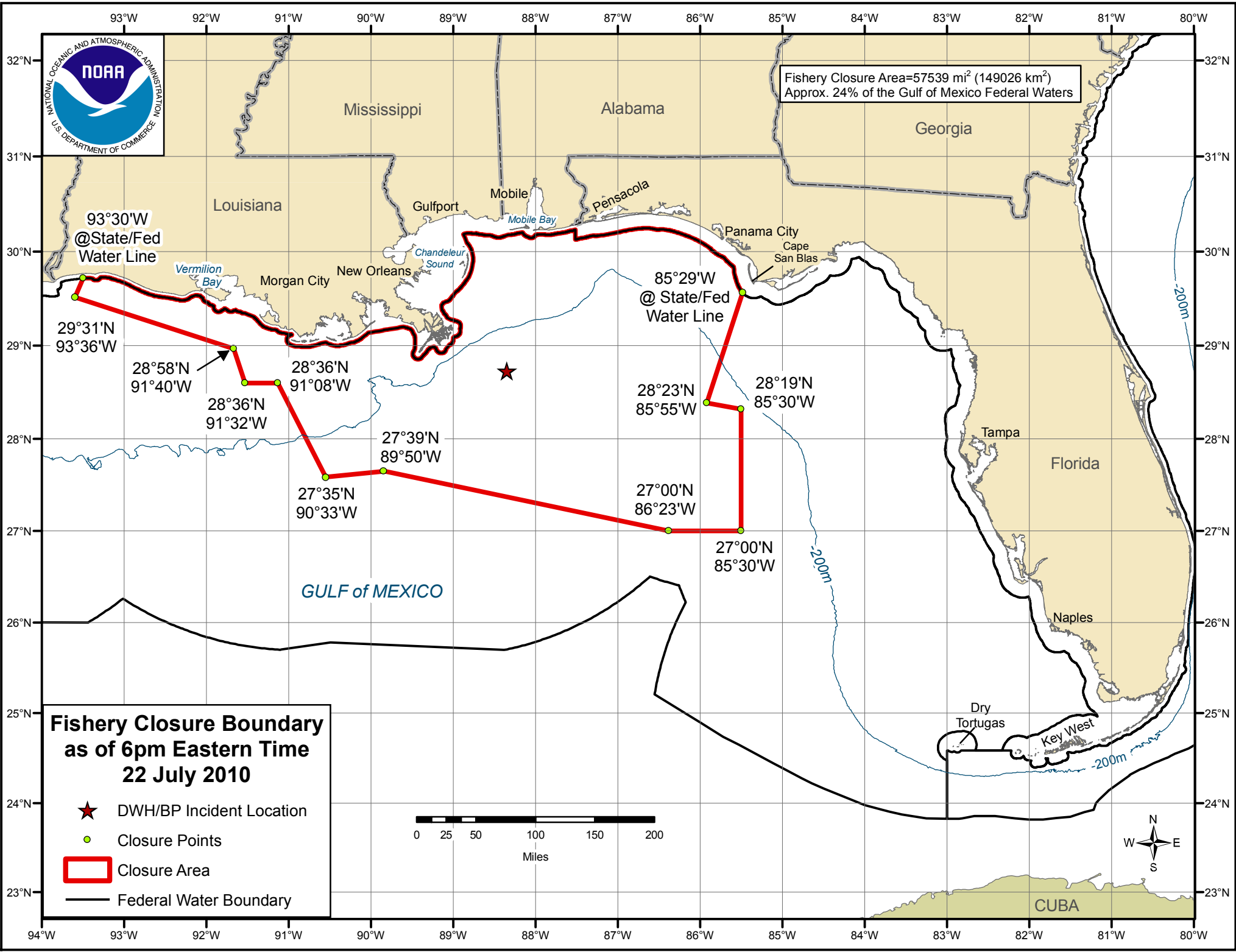




Fishery Closure Area=57539 mi<sup>2</sup> (149026 km<sup>2</sup>)  
Approx. 24% of the Gulf of Mexico Federal Waters



**Fishery Closure Boundary  
as of 6pm Eastern Time  
22 July 2010**

- ★ DWH/BP Incident Location
- Closure Points
- ▭ Closure Area
- Federal Water Boundary

